

RPG BB5 series (API 610 11TH ED. BB5)

The RPG BB5 double casing, radially split, between bearing pumps (barrel pumps) are designed to meet high pressure and temperature requirements in the oil and gas and power generation industry.

The RPG BB5 pumps are designed to meet the toughest and most demanding requirements of API 610 11TH ed. The barrel can be fitted with single- or multistage inner case assemblies, using volute or diffuser casings. The axial thrust loads are balanced by opposed impeller design or axial balancing drums. The barrels are made of forged or cast materials to meet the required strength.

The RPG BB5 pumps offer seal chamber design in accordance with API 610 to allow installation of API 681 single and double cartridge types of mechanical seals.

CAPACITY



Up to 2.000 m³/h

PRESSURE



Up to 4.000 m

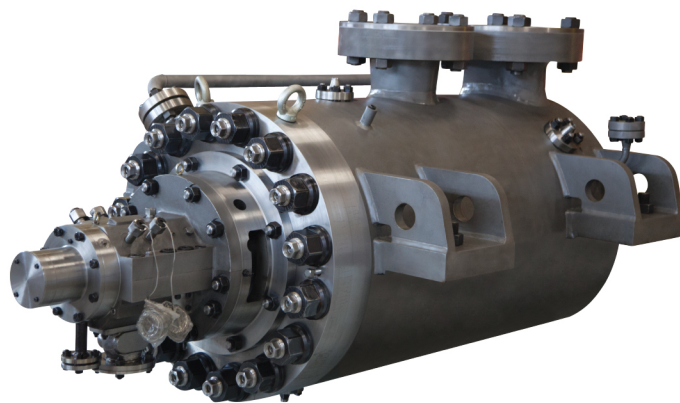
TEMPERATURE



Up to 300 °C

Options

- Gearbox API 677 or API 613 or VFD driven
- Steam turbine driven API 611 or 612
- API 670 monitory system
- Vibration monitoring and RTD's
- API 614 lube oil system integrated chapter 1 or chapter 3
- API 671 couplings
- Rotor disassembly tray



Product features

- Full compliance with API 610 11TH Ed (ISO 13709) type BB5
- Diffuser or volute design (depends on conditions/ applications)
- Forged or cast barrel casing
- Centre-line casing keyed for thermal expansion on high-temperature application
- Custom hydraulic design, optimized by CFD analysis
- Optional low NPSH impeller on first stage
- Heavy-duty shaft design for optimal stiffness and minimum deflection
- Axial thrust balance by balancing drum or opposed impeller design
- Leakage-free bearing sealing. Optional 'INPRO seal' for bearings protection
- Exceptional heat removal from bearings
- Different bearings and lubrication options available (antifriction bearings, journal radial bearings, tilting pad thrust bearings)
- Seal chamber design fully compliant with API 610 11TH ed / API 682 4TH ed.

Applications

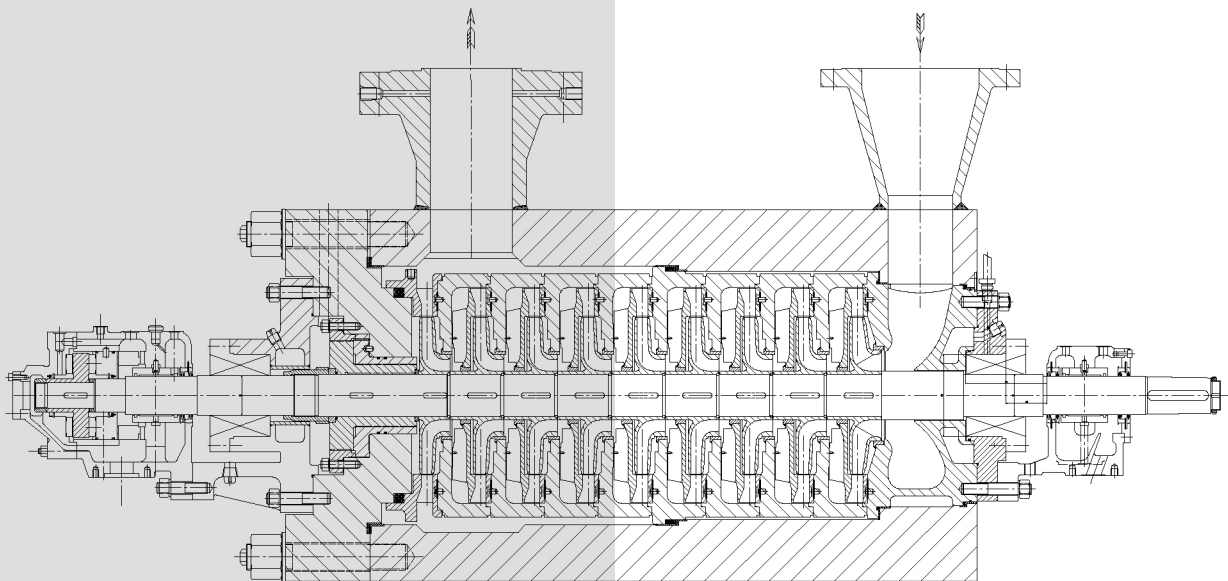
- Oil and gas industry
- Hydrocarbon processing
- Liquefied gas processing
- Petroleum production and refining
- Utility pumps
- Hot fluid transport application
- Power plants
- High-temperature service (boiler feed)
- High-pressure boiler feed
- High-pressure injection
- Pipeline booster pumps
- Ammonia and Carbamate

Materials

- All materials of construction in accordance with the latest API 610 Annex H Table H.1 available
- Special materials and coatings available upon request

Technical data

- capacity up to 2.000 m³/h
- Head up to 4.000 m
- Maximum temperature up to 300°C



Head Office

Havennummer 2248
Waalhaven ZZ 52-66
3088 HJ Rotterdam
The Netherlands
Tel: +31 (0) 10 428 52 33