

## RPG BB3 series (API 610 11<sup>TH</sup> ED. BB3)

The RPG BB3 series is designed as a multistage, heavy-duty, axial split casing pump in accordance with all the requirements of API 610 11<sup>TH</sup> ed. It is engineered and built for high-pressure, heavy-duty applications.

The RPG BB3 features a bigger shaft for low shaft deflection, and large sealing chambers in full compliance with API 610 11<sup>TH</sup> ed and API 682 4<sup>TH</sup> ed to accommodate single and double cartridge mechanical seals. Individual impellers balancing, and complete rotor assembly balancing ensure optimal performance and minimal vibrations.

The pump hydraulic design is fully optimized by CFD (Computational Fluid Dynamics) analysis. Special designs are available to meet customer requirements.

### CAPACITY



Up to 3.000 m<sup>3</sup>/h

### PRESSURE



Up to 1.500 m

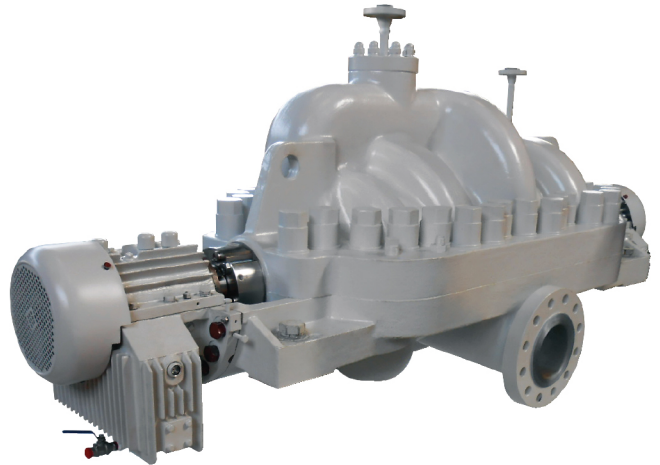
### TEMPERATURE



Up to 200 °C

### Options

- Vibration probes and RTD's
- Vibration and monitoring systems
- VFD or Gearbox driven
- Turbine driven
- Force lubricated hydrostatic bearings and tilting PAD bearings
- Other flange as per customer special request and engineered customary flanges



### Product features

- Full compliance with API 610 11<sup>TH</sup> ed (ISO 13709) type BB3
- In-line or opposed impeller arrangement
- Axially split casing to allow easy access to pump internals
- Radial and axial thrust balance is assured by diffuser design and balance piston or impeller arrangement
- Near center-line support and heavy-duty design
- Ball/ball, sleeve/ball, sleeve/tilting pad bearings
- Integral balancing flow line
- Seal chamber design fully compliant with API 610 11<sup>TH</sup> ed / API 682 4<sup>TH</sup> ed.

## Applications

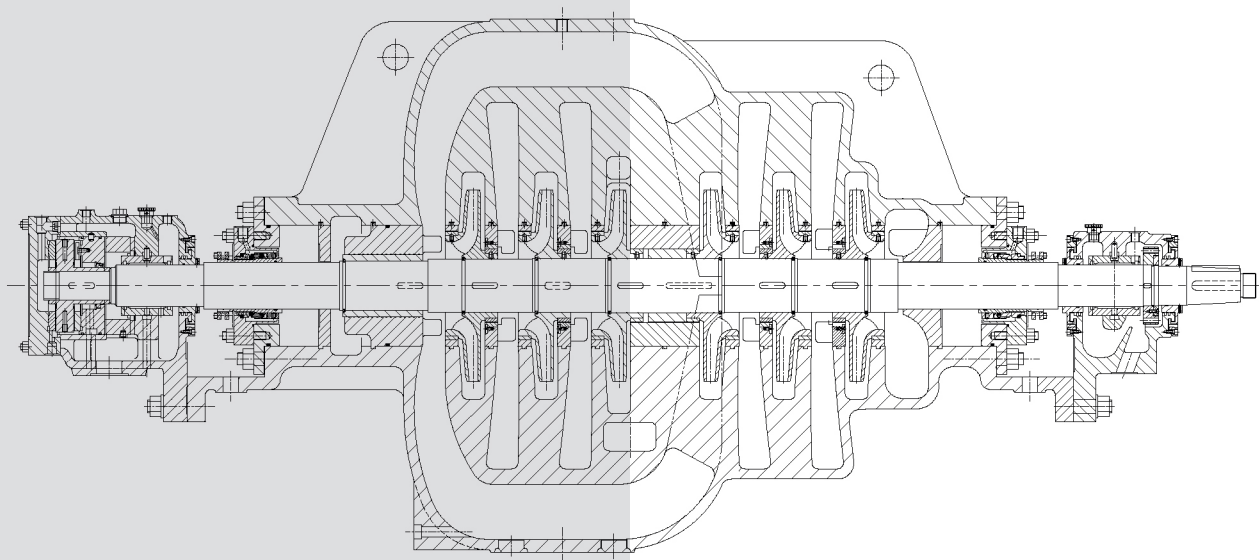
- Oil and gas industry
- Hydrocarbon processing
- Liquefied gas processing
- Petroleum production and refining
- Utility pumps
- Hot fluid transport application
- Power plants
- High-temperature service (boiler feed)
- High-pressure boiler feed
- High-pressure injection

## Materials

- All materials of construction in accordance with the latest API 610 Annex H Table H.1 available
- Special materials and coatings available upon request

## Technical data

- capacity up to 3.000 m<sup>3</sup>/h
- Head up to 1.500 m
- Maximum temperature up to 200°C



## Head Office

Havennummer 2248  
Waalhaven ZZ 52-66  
3088 HJ Rotterdam  
The Netherlands  
Tel: +31 (0) 10 428 52 33